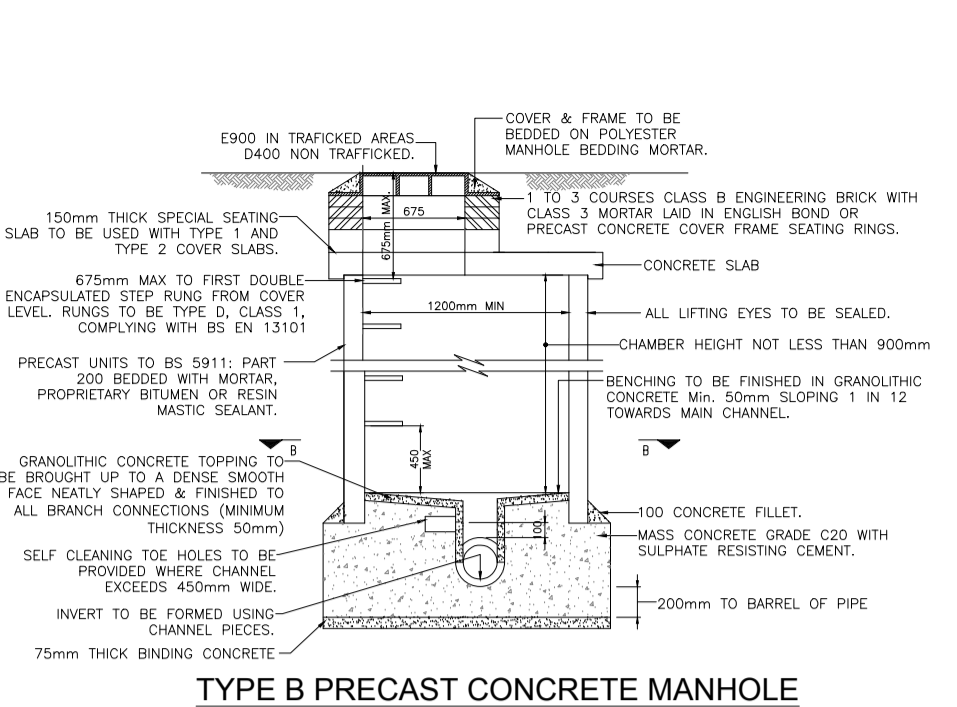
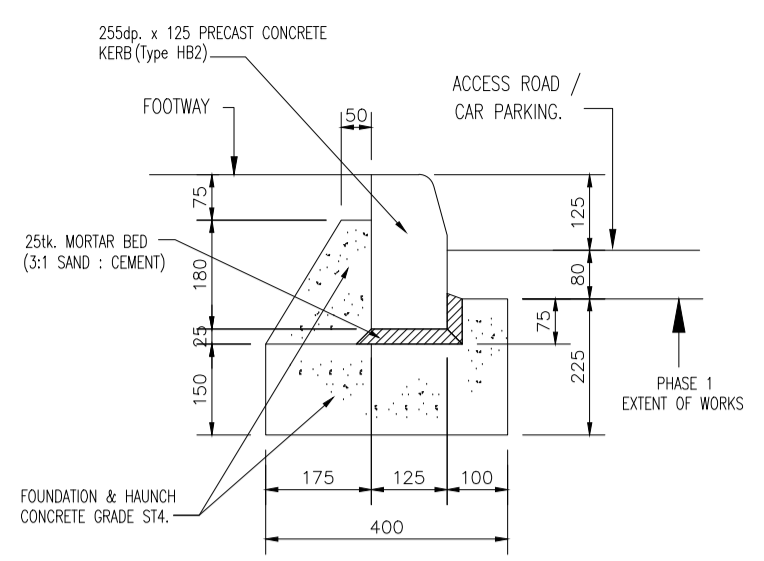
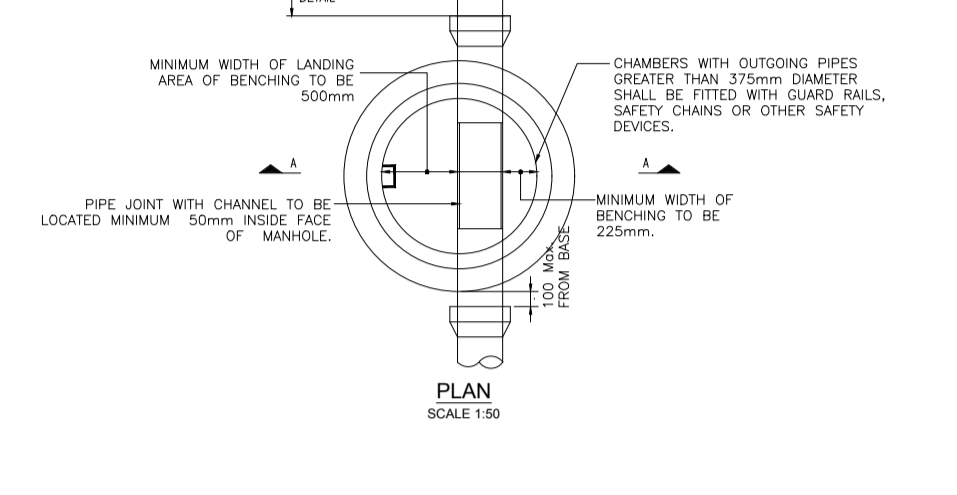
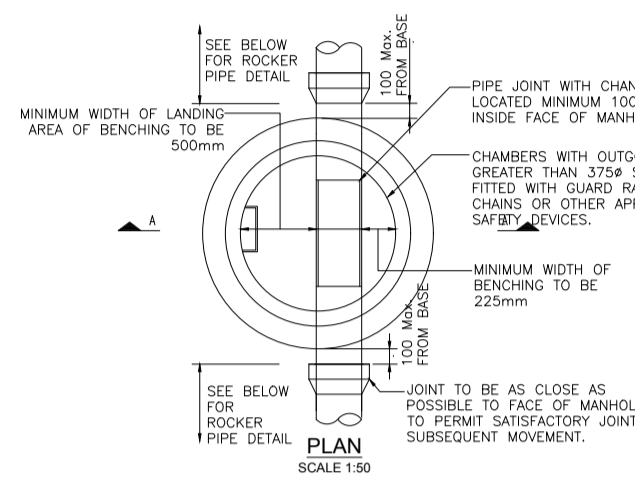


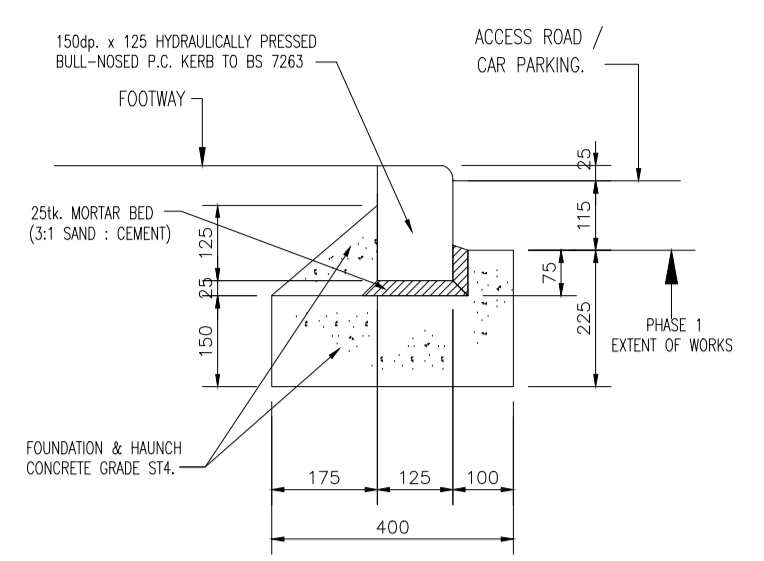
**TYPE A PRECAST CONCRETE MANHOLE**  
MAXIMUM DEPTH FROM COVER LEVEL TO SOFFIT OF PIPE 3.0m - 6.0m



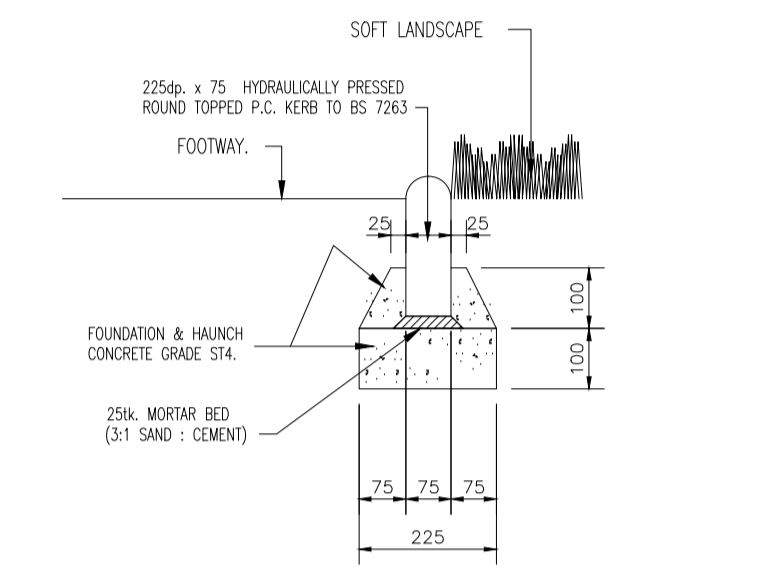
**TYPE B PRECAST CONCRETE MANHOLE**  
MAXIMUM DEPTH FROM COVER LEVEL TO SOFFIT OF PIPE 1.0m - 3.0m



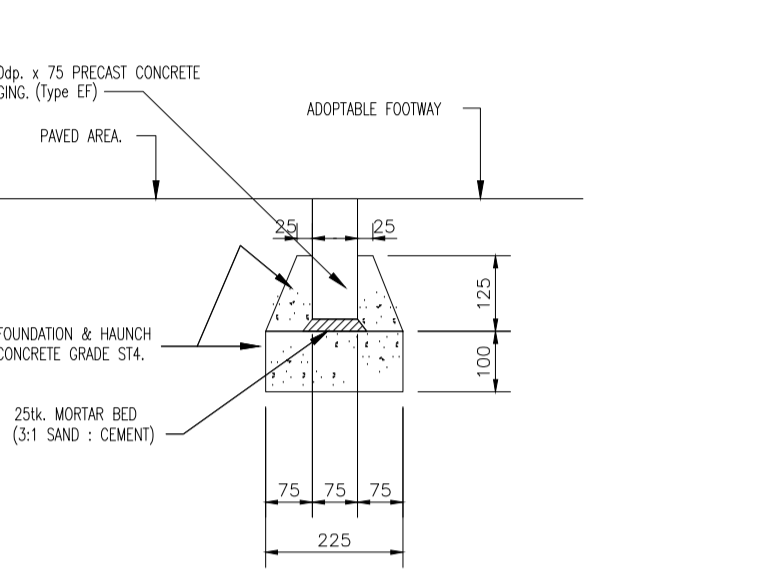
**KERB DETAIL (K1)**  
Scale 1:10



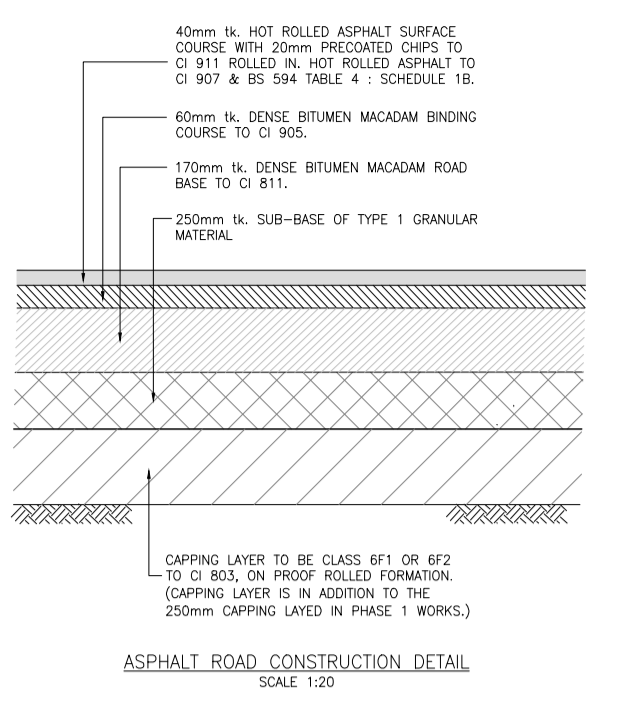
**TYPICAL DROP KERB DETAIL (K2)**  
Scale 1:10



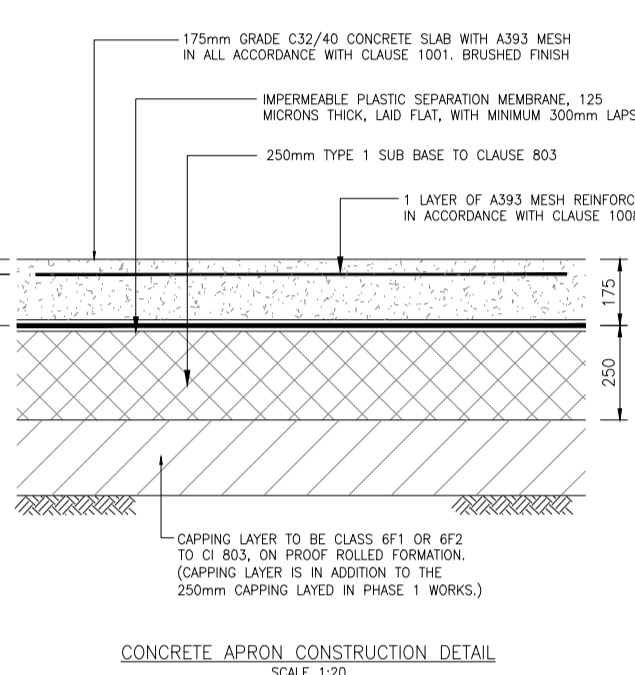
**EDGING KERB DETAIL (K3)**  
Scale 1:10



**TYPICAL FLUSH KERB DETAIL (K4)**  
Scale 1:10



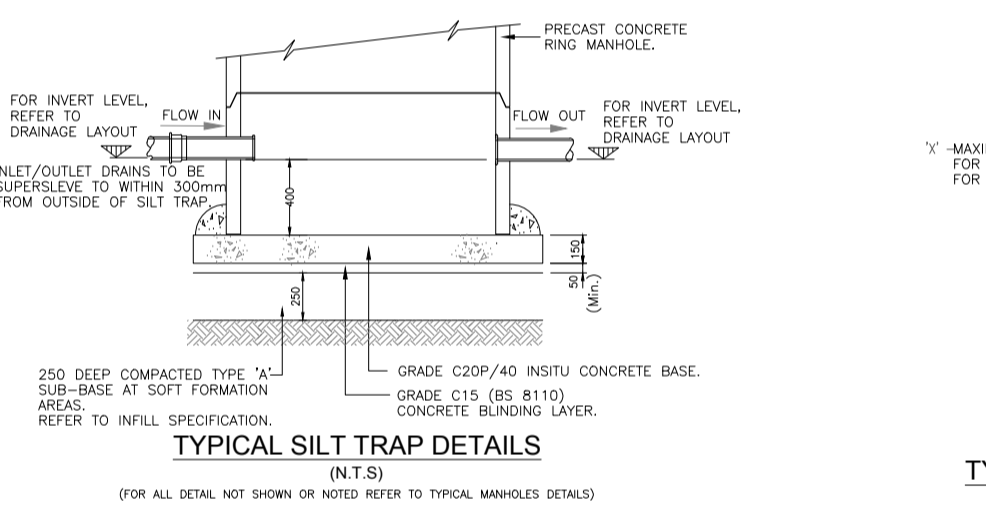
**ASPHALT ROAD CONSTRUCTION DETAIL**  
SCALE 1:20



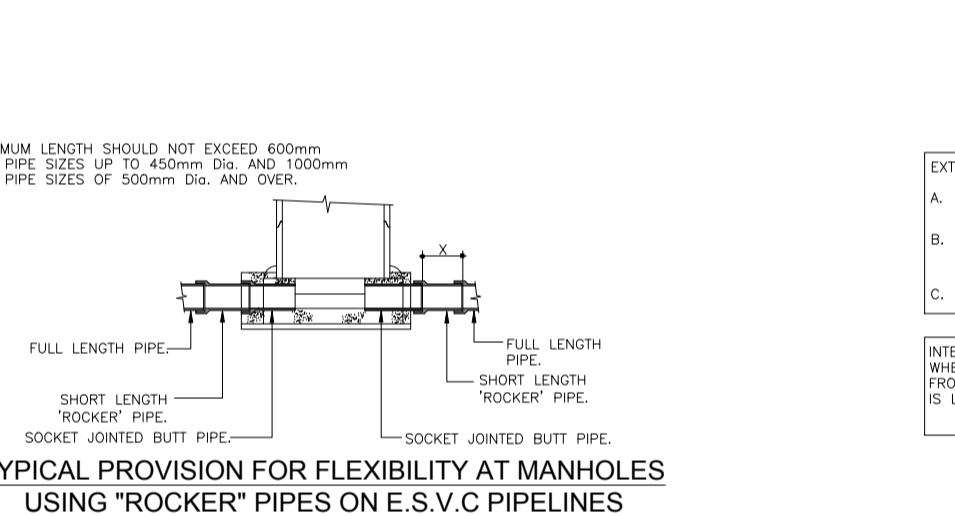
**CONCRETE APRON CONSTRUCTION DETAIL**  
SCALE 1:20

**CONCRETE SLAB NOTES**

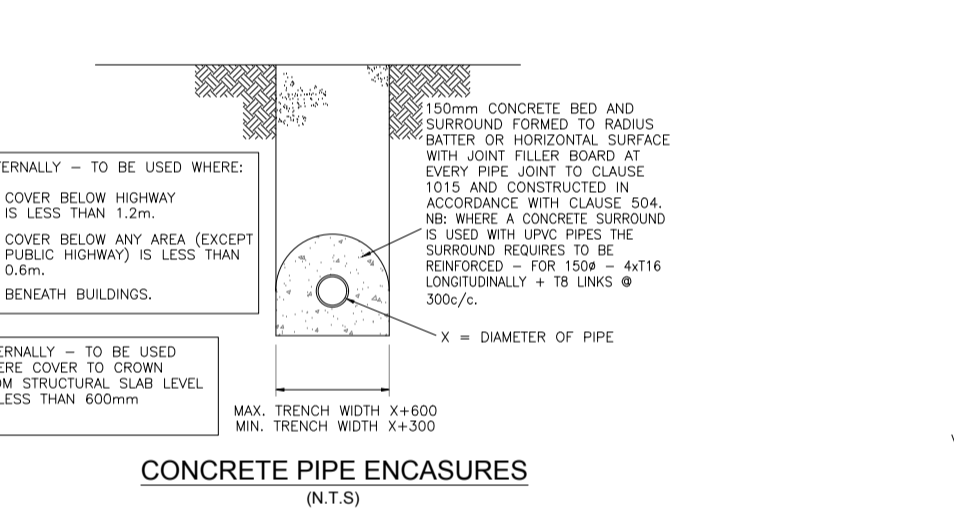
1. CONCRETE TO BE C32/40 IN ACCORDANCE WITH CLAUSE 1001
2. MESH REINFORCEMENT TO BE ONE LAYER A383 WITH 40mm  $\pm$ 10mm TOP COVER
3. FORMATION LEVEL TO BE PROOF ROLLED AND SOFT SPOTS TO BE REMOVED AND INFILLED WITH CAPPING LAYER MATERIAL (6F1 OR 6F2) OR OTHER MATERIAL AS DIRECTED BY THE ENGINEER.



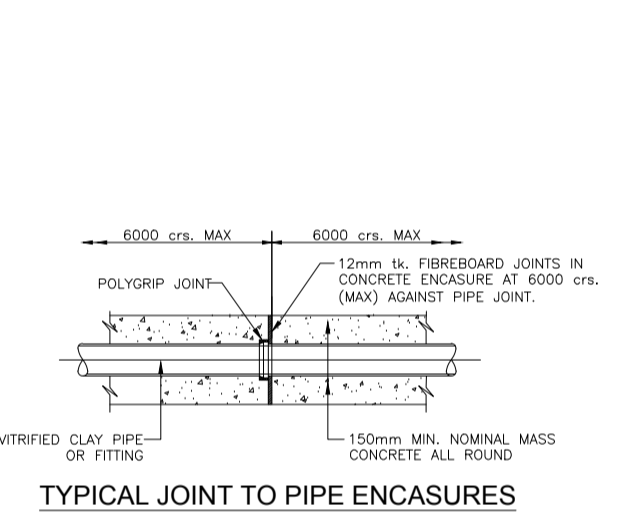
**TYPICAL SILT TRAP DETAILS**  
(N.T.S.)



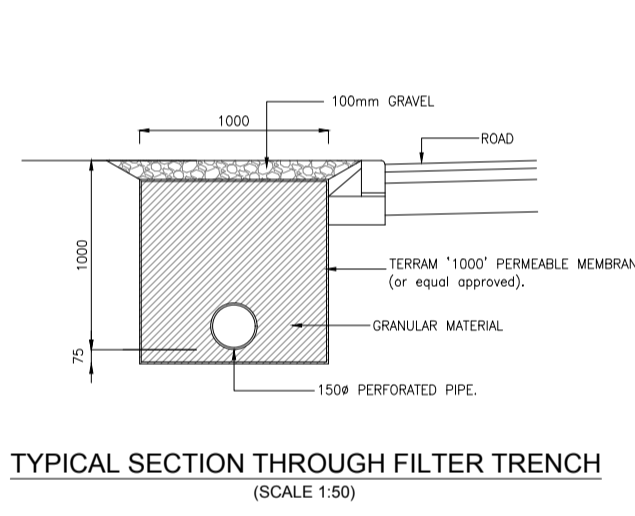
**TYPICAL PROVISION FOR FLEXIBILITY AT MANHOLES USING 'ROCKER' PIPES ON E.S.V.C PIPELINES**  
(N.T.S.)



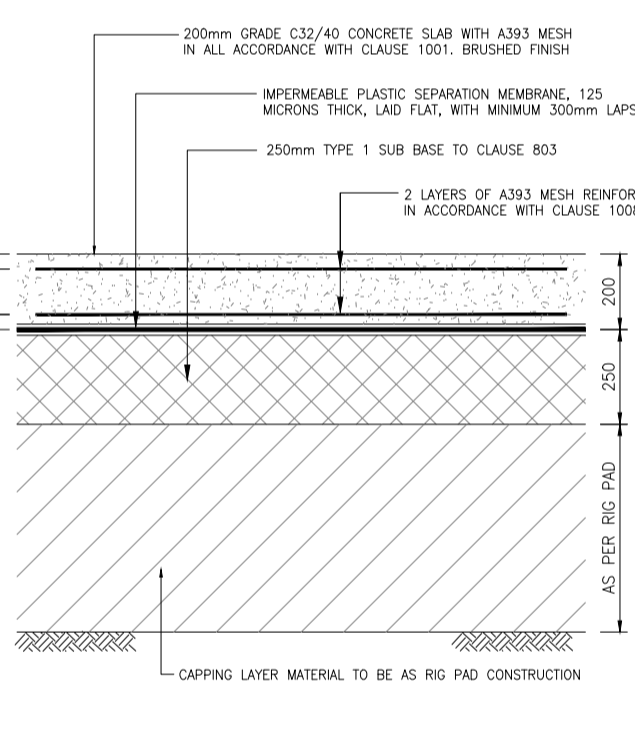
**CONCRETE PIPE ENCLOSURES**  
(N.T.S.)



**TYPICAL JOINT TO PIPE ENCLOSURES**  
(N.T.S.)



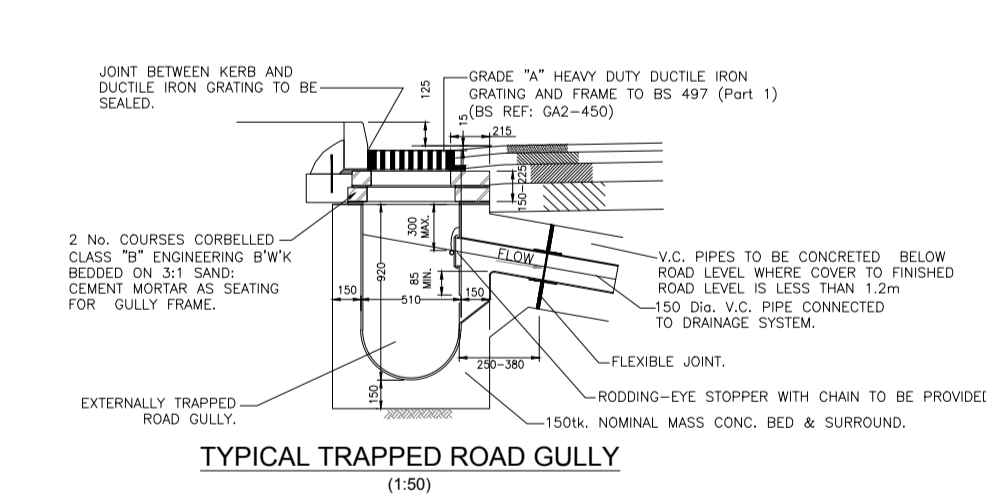
**TYPICAL SECTION THROUGH FILTER TRENCH**  
(SCALE 1:50)



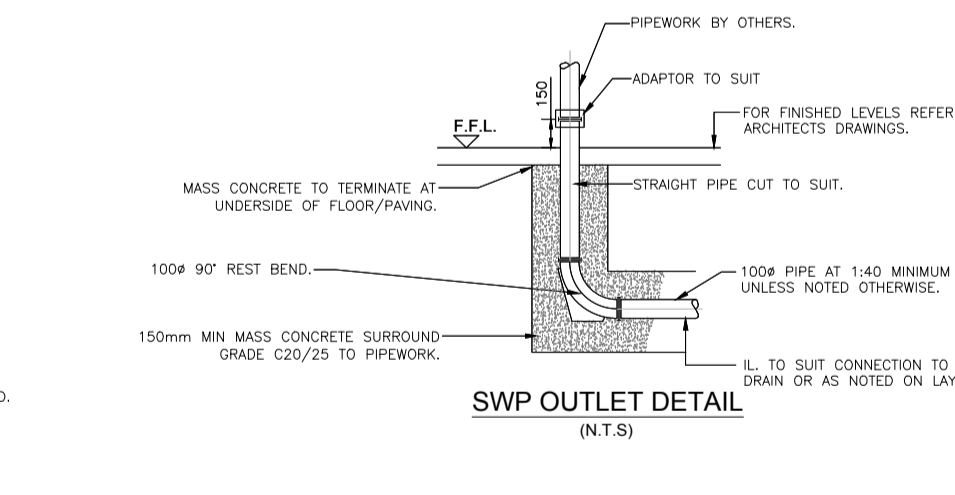
**CONCRETE ROAD CONSTRUCTION DETAIL**  
SCALE 1:20

**CONCRETE SLAB NOTES**

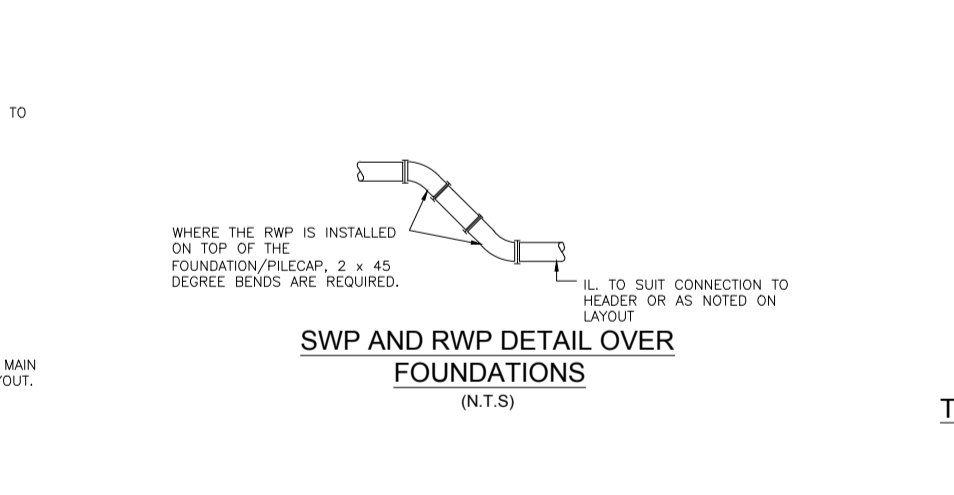
1. CONCRETE TO BE C32/40 IN ACCORDANCE WITH CLAUSE 1001
2. MESH REINFORCEMENT TO BE TWO LAYERS A383 WITH 40mm  $\pm$ 10mm TOP/BOTTOM COVER
3. FORMATION LEVEL TO BE PROOF ROLLED AND SOFT SPOTS TO BE REMOVED AND INFILLED WITH CAPPING LAYER MATERIAL (6F1 OR 6F2) OR OTHER MATERIAL AS DIRECTED BY THE ENGINEER.



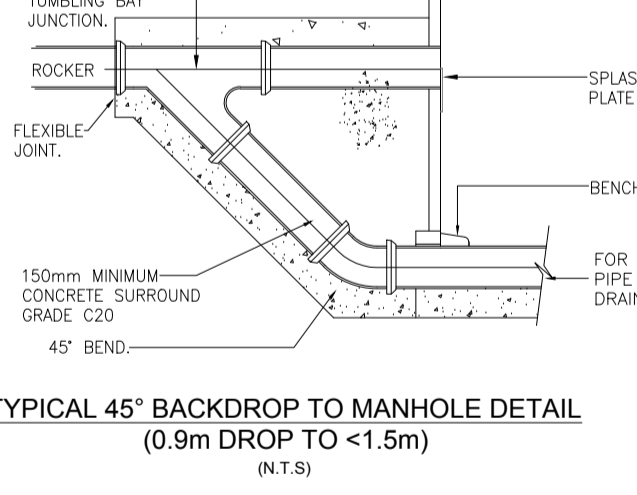
**TYPICAL TRAPPED ROAD GULLY**  
(1:50)



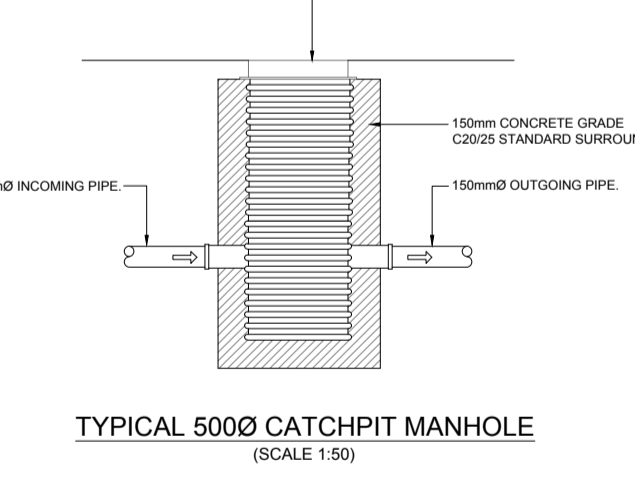
**SWP OUTLET DETAIL**  
(N.T.S.)



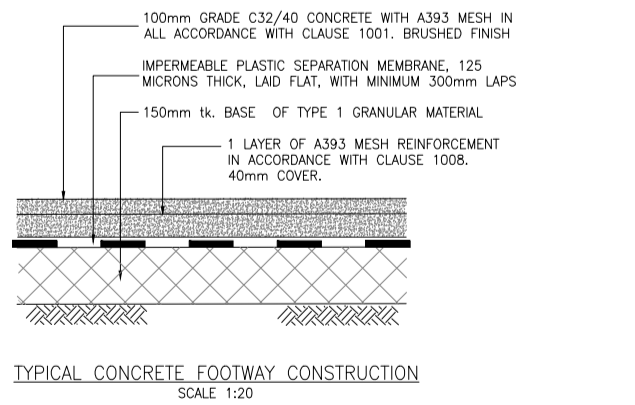
**SWP AND RWP DETAIL OVER FOUNDATIONS**  
(N.T.S.)



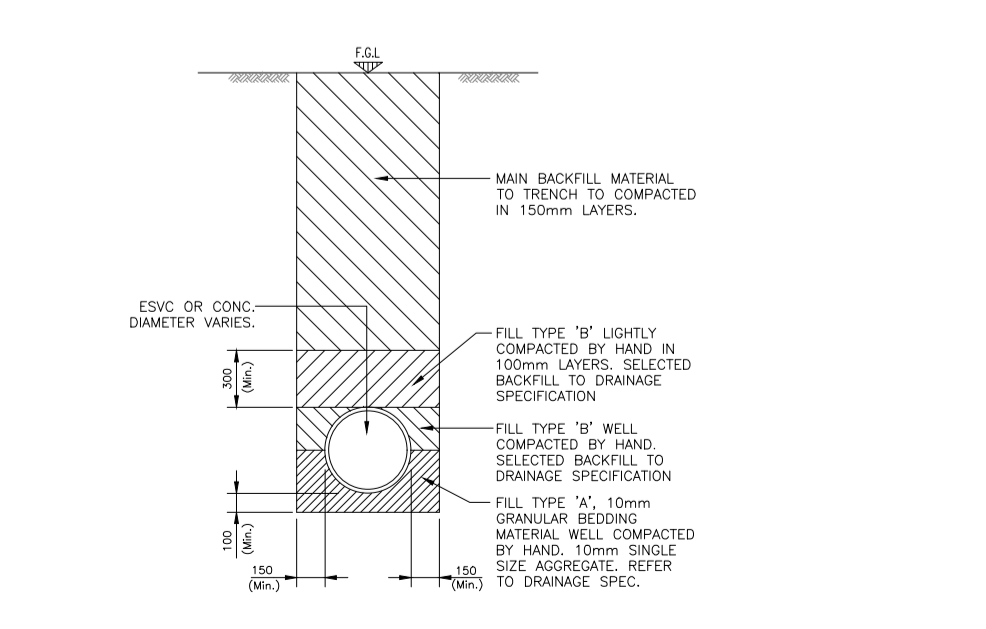
**TYPICAL 45° BACKDROP TO MANHOLE DETAIL (0.9m DROP TO <1.5m)**  
(N.T.S.)



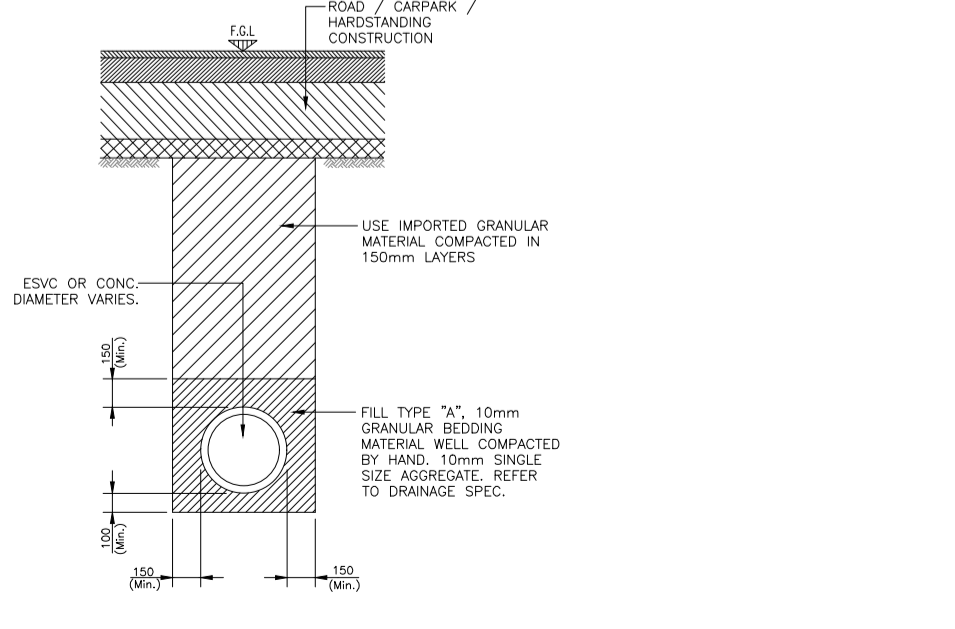
**TYPICAL 5000 CATCHPIT MANHOLE**  
(SCALE 1:50)



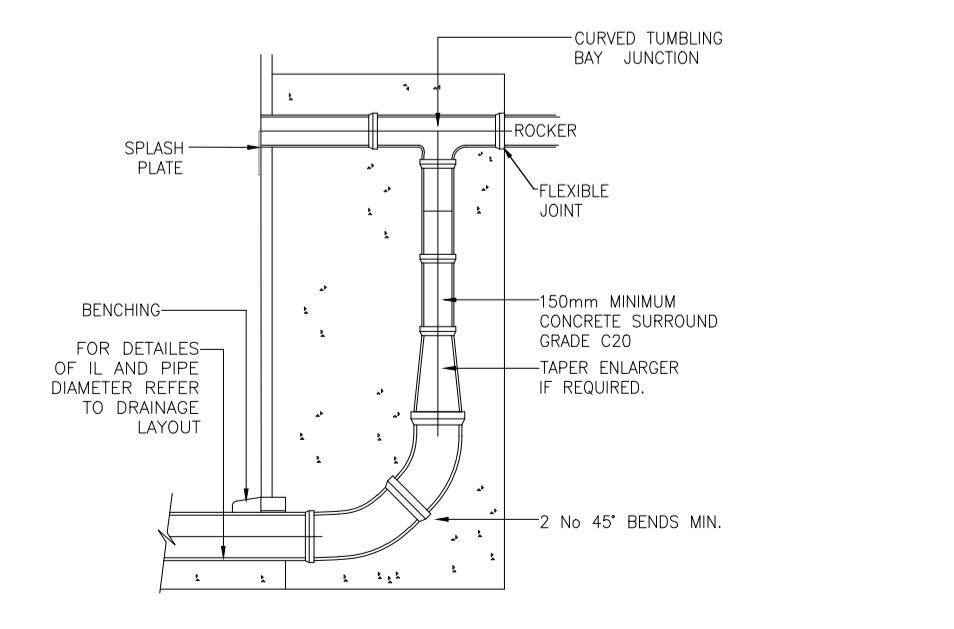
**TYPICAL CONCRETE FOOTWAY CONSTRUCTION**  
SCALE 1:20



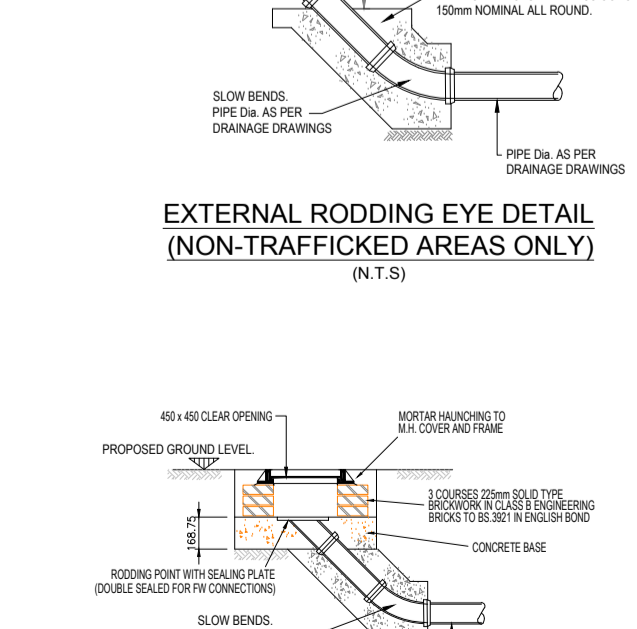
**TYPICAL PIPE BEDDING**  
(N.T.S.)



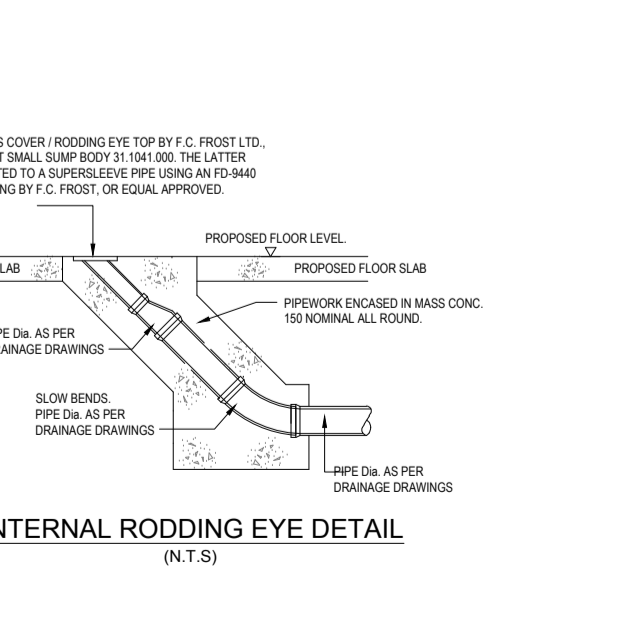
**TYPICAL PIPE BEDDING**  
(BELOW ROADS / CAR PARK / HANDSTANDING AREAS)



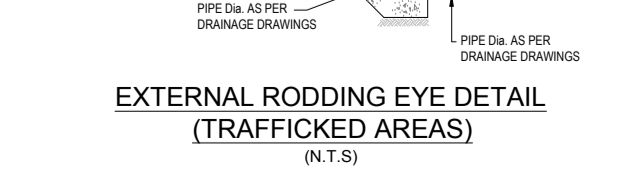
**TYPICAL 90° BACKDROP TO MANHOLE DETAIL (DROP >1.5m)**  
(N.T.S.)



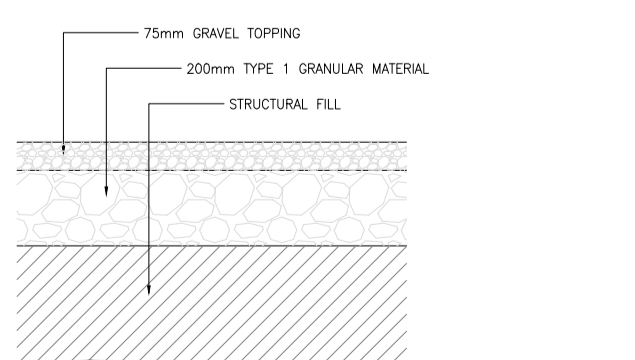
**EXTERNAL RODDING EYE DETAIL (NON-TRAFFICKED AREAS ONLY)**  
(N.T.S.)



**INTERNAL RODDING EYE DETAIL**  
(N.T.S.)



**EXTERNAL RODDING EYE DETAIL (TRAFFICKED AREAS)**  
(N.T.S.)



**TYPICAL PLATFORM CONSTRUCTION**  
SCALE 1:20

CONSTRUCTION RISKS	MAINTENANCE / CLEANING RISK	DEMOLITION RISKS
<p>In addition to the hazard/risks normally associated with the types of work detailed on this drawing take note of above.</p> <p>It is assumed that all works on this drawing will be carried out by a competent contractor working, where appropriate, to an appropriate method statement.</p>		
<p><b>SAFETY, HEALTH AND ENVIRONMENTAL INFORMATION BOX</b></p>		
<p>PROJECT TITLE AMENDED: <b>PLANNING</b></p>		
<p>Client: <b>SSE GENERATION IRELAND LTD</b></p>		
<p>Project Title: <b>PROPOSED 110kV TRANSMISSION SUBSTATION</b></p>		
<p>Drawing Title: <b>TYPICAL CONSTRUCTION DETAILS</b></p>		
Designed	Drawn	Checked
EP	CGY	CGY
Approved	Approved	Date
CGY	CGY	NOV18
URS Internal Project No.:		Submittal
Scale @ A1		Zone / Mileage
<p>AS SHOWN</p>		
<p>This document has been prepared in accordance with the scope of AECOM appointment with its client and is subject to the terms of that appointment. AECOM accepts no liability for any use of this document other than by its client and only for the purposes for which it was prepared and provided. Only written dimensions shall be used.</p>		
<p>AECOM 97 HAYMARKET TERRACE EDINBURGH EH12 5HD TEL 0131-347-1100 FAX 0131-347-1101 www.aecom.com</p>		
Drawing Number		Rev
60581192/0814		A